

- [Welcome](#)
- [About PCB](#)
 - [Our vision and purpose](#)
 - [Meet the team](#)
 - [How we work](#)
 - [Our role in Greater Manchester](#)
 - [Our successes](#)
- [PCB news](#)

Welcome

As chair of Greater Manchester Primary Care Provider Board (PCB), it gives me great pleasure to welcome you to the first of our regular stakeholder updates.

For this first edition, we're taking the opportunity to introduce key information about the PCB, how we operate and where we fit in and contribute to the Greater Manchester health and care system.

In telling our story, we aim to develop a greater understanding of the PCB. I hope you enjoy these updates and encourage your feedback so we can improve how we communicate with you longer term.

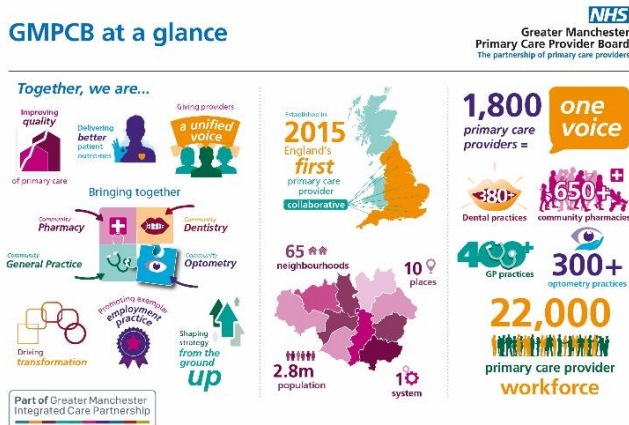


Dharmesh Patel
Chair, Greater Manchester Primary Care Provider Board
Twitter: [@DharmeshP108](#)

About us

Our vision and purpose

GMPCB at a glance



In line with [our vision](#) we bring together the four primary care disciplines of community pharmacy, dentistry, general practice, and optometry. We aim to improve quality within our 1,800 primary care providers to deliver better health outcomes for our communities.

Our 'At a glance' [infographic and animation](#) give you all the PCB facts and figures. They explain our role, showing how we provide a voice to primary care providers and impact the health of local people.

Meet the team

We are led by a [Board](#) which is made up a chair, chief officer, chairs of the four primary care sub-boards, managing director and additional representatives from each of the four primary care disciplines. The Board is supported by our [Delivery Team](#), which manages our programmes of work.

How we work

Building on collaborative achievements since 2015, we develop strategy for the provision of primary care. This is shaped through knowledge sharing, data, insight and ground-level practice involvement. We [focus on the themes](#) of neighbourhood working, partnerships, workforce, digital and quality improvement.

Our role in Greater Manchester

A central part of Greater Manchester Integrated Care Partnership, we have an essential role to play in achieving Greater Manchester's health and care ambitions. [Our website](#) features a diagram to demonstrate how the PCB and the four primary care discipline boards fit into the bigger picture.

Our successes

Our website showcases some of our [proudest achievements](#) to date, providing insight into our ability to instigate significant transformation, leading to better health and wellbeing for our communities.

PCB news

Primary care voice at system level



We are delighted to have [secured four seats on the Greater Manchester Integrated Care Partnership board](#).

This means all four primary care disciplines of community pharmacy, general practice, optometry and dentistry will be represented at the highest level within our health and care system and will be contributing to Greater Manchester strategy.

PCB website

Our [new website](#), which brings together resources for the four primary care disciplines of community pharmacy, general practice, optometry and dentistry for the first time.

It features information about the PCB, our programmes and initiatives, as well as all latest news, and our success stories.



Shaping the future of Primary Care in Greater Manchester

More than 350 professionals attended the [Greater Manchester Primary Care Summit](#) last Autumn. This was the starting point to create a new GM Primary Care Blueprint to replace the current Primary Care Strategy, which reaches the end of its life later this year. The Summit identified nine priorities and principles for the Blueprint.

GMICP has established three-person leadership teams for each of the nine Chapters, with leads from the PCB, Locality Teams and Greater Manchester Primary Care Team.

The latest [GMICP update](#) on Blueprint development outlines the process in more detail. Chapter leads and engagement teams will ensure colleagues from across the system, including primary care providers have the opportunity to engage with, and comment on, the proposals.

Listen to our latest Podcasts



Our GP Excellence programme supports the development and improvement of GP Practices. The latest edition of the [GP Excellence podcast](#) focuses on Equality and Diversity.

Our Health and Wellbeing (HWB) programme shares resources to support wellbeing among all primary care audiences. The latest [HWB podcast](#) focuses on the importance of leadership in ensuring the wellbeing of teams and individuals.

Find out more

Visit: gmpcb.org.uk

Follow: [@GM_PCB](#)

Contact: info.gmpcb@nhs.net

Part of Greater Manchester
Integrated Care Partnership

