

NMS Depression Expansion Pilot

Greater Manchester Weekly Updates

Welcome to the weekly updates of the NMS Depression Expansion Pilot in Greater Manchester (GM):

Aims of the Pilot:

The aim of the pilot is to test the inclusion of depression as a therapeutic area in the NMS and to test a revised NMS service model that would align more closely with the treatment of depression in primary care as part of an integrated clinical pathway. The service will also provide an opportunity to better utilise community pharmacists in supporting patients with mental health conditions.

Current Activity:

- **40** community pharmacies in GM were invited to participate in the pilot on 02/08/2023, of which currently:
 - **3 Live & active**
(Already engaging patients)
 - **24 Live & ready**
(Ready to commence with patient engagement)
 - **10 Awaiting confirmation of readiness**
(Waiting to confirm readiness by returning the “short readiness” form sent to the pharmacy NHSmail)
 - **3 Pending registration on NHS BSA**
(The portal remains open and at this stage and the remaining unregistered contractors to still able to register)
- As of 01/09/2023, a total of **92 community pharmacies in England** have registered on the NHS BSA MYS portal to participate in the pilot, **37 of them are in Greater Manchester ICB.**

Royal Pharmaceutical Society (RPS):

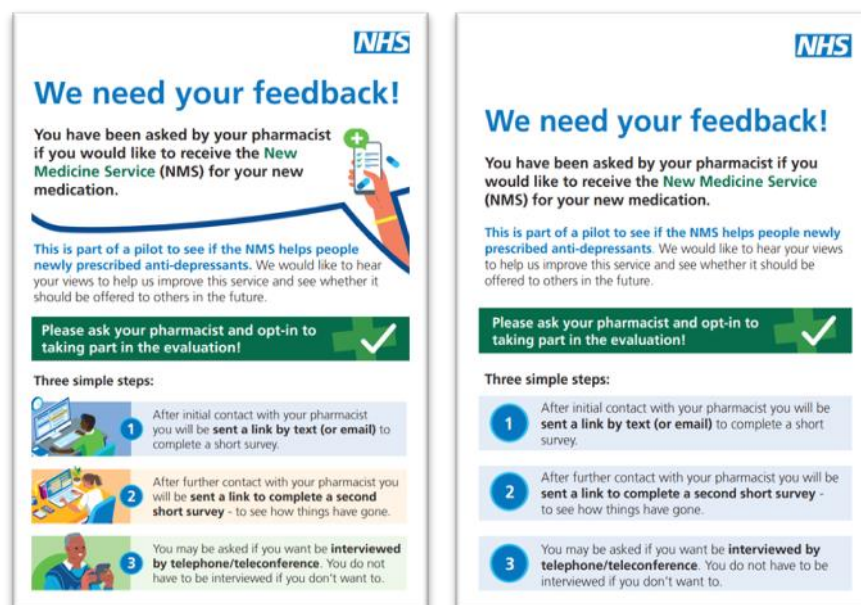
Nicola Greenhalgh, Deputy Chief Pharmacist Essex Partnership University NHS Foundation Trust has written an interesting blog which is published on the RSP website ([Antidepressants in the New Medicines Service \(rpharms.com\)](https://www.rpharms.com)). In the blog Nicola talks about integrating mental health in medication support and building pharmacists' confidence around mental health.

Patients' Feedback and the Pilot Evaluation:

- Submission of the patient engagement record on the web-based collection tool triggers an online questionnaire to be sent to the patient (if the opt-in to take part). This is repeated when the patient leaves the service after a follow-up or early exit from the service. The comparison of responses at these two timepoints is vital for the pilot's evaluation. **Therefore, records should not be held back and submitted in batches, i.e., patient engagement, intervention and follow-up submitted via the data collection tool on the same day. They should be submitted on the same day to allow for the feedback questionnaire to be sent to the patient.**
- The following flyer can be used to inform and encourage eligible patients to take part in the pilot evaluation and feedback.



PRL_anti_depressant_pilot_A5_flyer_V1.pdf



Webinar:

Preparations are underway for a webinar to support pharmacists delivering this pilot. GM Mental Health Trusts and the Pharmacy Integration Fund team will be participating in supporting pharmacists. More details including invitations will be sent out soon.

N.B. this is a support webinar and is not part of the mandatory training for the pilot. Therefore, you don't need to wait for the webinar to commence with the pilot activities.

Mandatory Training:

Completion of the following training resources within **the last two years** is required: <https://www.cppe.ac.uk/services/anms-pilot>

- Centre for Pharmacy and Postgraduate Education (CPPE): Consulting with people with mental health problems (up to 120min)
- Royal College of Psychiatrists: Antidepressants (up to 90min)
- Royal College of Psychiatrists: Anxiety, panic and phobias (up to 60min)
- Zero Suicide Alliance (ZSA) Suicide Awareness Training (up to 20min)
- Scenario-based educational videos (up to 30min)

Evidence of competencies must be retained within each pharmacy for all pharmacists and staff delivering this service including the requirements of the Advanced Service Specification for NMS. It may be requested at any time by the commissioner.

Resources:

- [NHS Community Pharmacy New Medicine Service \(NMS\) Expansion Pilot: Inclusion of Depression as a Therapeutic Area and Revised Service Delivery Model | NHSBSA](#)
- [Service Level Agreement & Service Specification \(nhsbsa.nhs.uk\)](#)
- [New Medicine Service \(NMS\) - Community Pharmacy England \(cpe.org.uk\)](#)
- [CPPE NMS gateway page \(cppe.ac.uk\)](#)

Kind regards,

Ali Khalaf

MPharm, MRPharmS

Project Manager

Nationally Commissioned Pharmacy Services Programme Team

NHS Greater Manchester Integrated Care

EMAIL: ALI.KHALAF1@NHS.NET , ALI@CPGMHEALTHCARE.CO.UK

PROGRAMME TEAM: gmhscp.gmpharmacyservices@nhs.net



Community Pharmacy
Provider Board (CPPB)
Part of Greater Manchester
Integrated Care Partnership



Greater Manchester
Integrated Care